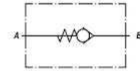
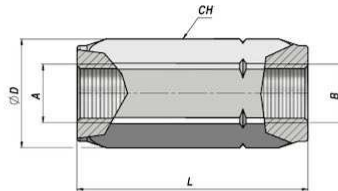
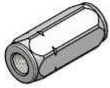
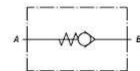
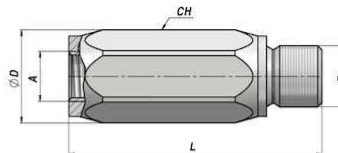


VALVOLE UNIDIREZIONALI - CHECK VALVES

VUR/CVALVOLA UNIDIREZIONALE (TENUTA A CONO)
CHECK VALVE (POPPET TYPE)

Codice Code	A - B BSP	Q MAX l/min	P MAX bar	Tipo Type	L	ØD	CH	kg
VSG303.C10000	1/4"	30	400	VUR 010-C	58	21	19	0,10
VSG303.C20000	3/8"	50	400	VUR 020-C	62	27	24	0,18
VSG303.C30000	1/2"	90	350	VUR 030-C	71	33	30	0,31
VSG303.C40000	3/4"	130	300	VUR 040-C	83	40	36	0,56
VSG303.C50000	1"	180	270	VUR 050-C	106	59	45	0,91
VSG303.C60000	1"1/4	250	250	VUR 060-C	127	63	55	1,48
VSG303.C70000	1"1/2	380	200	VUR 070-C	138	74	65	2,37

Pressione di apertura - Opening pressure : bar 0.5 (Standard) - 4 - 8

MATERIALE CORPO : ACCIAIO
BODY MATERIAL : STEELMONTAGGIO IN LINEA
LINE MOUNTING**VUR/CMF****NEW!**VALVOLA UNIDIREZIONALE (TENUTA A CONO)
CHECK VALVE (POPPET TYPE)

Codice Code	A - B BSP	Q MAX l/min	P MAX bar	Tipo Type	L	ØD	CH	kg
VSG305.C10000	1/4"	30	400	VUR 010-CMF	58	21	19	0,10
VSG305.C20000	3/8"	50	400	VUR 020-CMF	62	27	24	0,18
VSG305.C30000	1/2"	90	350	VUR 030-CMF	71	33	30	0,31
VSG305.C40000	3/4"	130	300	VUR 040-CMF	76	40	36	0,56
VSG305.C50000	1"	180	270	VUR 050-CMF	106	59	45	0,91
VSG305.C60000	1"1/4	250	250	VUR 060-CMF	127	63	55	1,48

Pressione di apertura - Opening pressure : bar 0.5 (Standard) - 4 - 8

MATERIALE CORPO : ACCIAIO
BODY MATERIAL : STEELMONTAGGIO IN LINEA
LINE MOUNTING

Stampato da Calameo.com

276

L'azienda si riserva il diritto di apportare modifiche al prodotto senza preavviso al cliente.
The company reserves the right to modify the product at any time without prior notice.