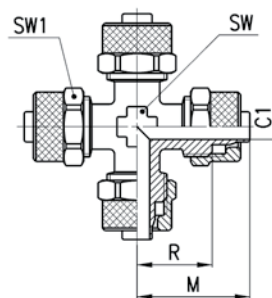


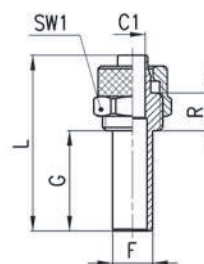
Raccordi Mod. 1600



INGOMBRI

Mod.	Tubo	C1	M	R	SW	SW1	Peso (g)
1600 6/4	6/4	3	22,5	15	8	12	41
1600 8/6	8/6	5	22,5	15	10	14	52

Raccordi Mod. 1470



INGOMBRI

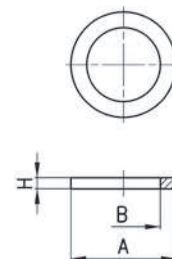
Mod.	Tubo	F	C1	G	L	R	SW1	Peso (g)
1470 6/4	6/4	6	3	20	35	7,5	12	11
1470 8/6	8/6	8	5	20	35	7,5	14	15

Anello di tenuta Mod. 2651

Nuova taglia



Materiale: Alluminio



INGOMBRI

Mod.	A	B	H	Peso (g)
2651 1/8	14	9,8	1,5	1
2651 1/4	18	13,2	1,5	1
2651 3/8	22	16,7	1,5	1
2651 1/2	26	20,9	1,5	1
2651 1	38,5	33,4	1,5	2