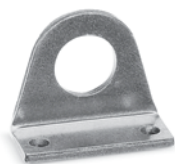
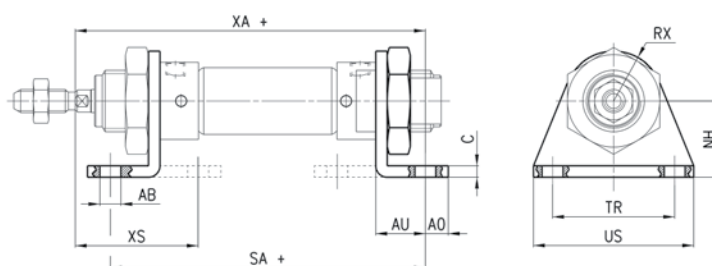


Ancoraggio a piedini Mod. B

Materiale piedini e ghiera: acciaio zincato.


 La fornitura comprende:
 N° 2 piedini
 N° 1 ghiera mod. V

+ = sommare la corsa


INGOMBRI

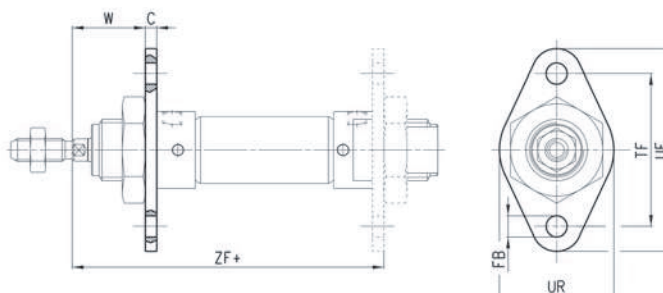
Mod.	∅	TR	US	∅AB	C	NH	AO	AU	RX	XA+	SA+	XS
B-8-10	8-10	25	35	4,5	2,5	16	4,5	10,5	10	72,5	67	54
B-12-16	12	32	42	5,5	3	20	6	13	13	82,5	71	64
B-12-16	16	32	42	5,5	3	20	6	13	13	91	82	68
B-20-25	20	40	54	6,6	4	25	8	16	20	108	100	80
B-20-25	25	40	54	6,6	4	25	8	16	20	113,5	101,5	85,5

Ancoraggio a flangia Mod. E

Materiale: acciaio zincato



+ = sommare la corsa


INGOMBRI

Mod.	∅	C	∅FB	TF	UF	UR	W	ZF
E-8-10	8-10	2,5	4,5	30	25	40	13,5	64,5
E-12-16	12	3	5,5	40	30	53	19	75
E-12-16	16	3	5,5	40	30	53	19	81
E-20-25	20	4	6,6	50	40	66	20	96
E-20-25	25	4	6,6	50	40	66	24	101,5