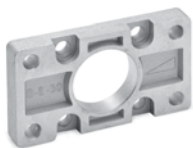


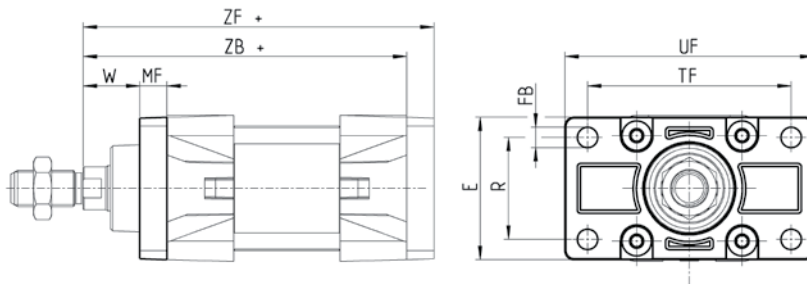
**Ancoraggio a flangia anteriore e posteriore Mod. D-E**

Materiale: Alluminio



La fornitura comprende:  
N° 1 flangia  
N° 4 viti

+ = sommare la corsa



INGOMBRI											
Mod.	∅	W	MF	ZB	TF	R	UF	E	FB	ZF	coppia di serraggio
<b>D-E-41-32</b>	32	16	10	120	64	32	86	45	7	130	6 Nm
<b>D-E-41-40</b>	40	20	10	135	72	36	88	52	9	145	6 Nm
<b>D-E-41-50</b>	50	25	12	143	90	45	110	63	9	155	13 Nm
<b>D-E-41-63</b>	63	25	12	158	100	50	116	73	9	170	13 Nm
<b>D-E-41-80</b>	80	30	16	174	126	63	148	95	12	190	19 Nm
<b>D-E-41-100</b>	100	35	16	189	150	75	176	115	14	205	22 Nm
<b>D-E-41-125</b>	125	45	20	225	180	90	224	135	16	245	26 Nm

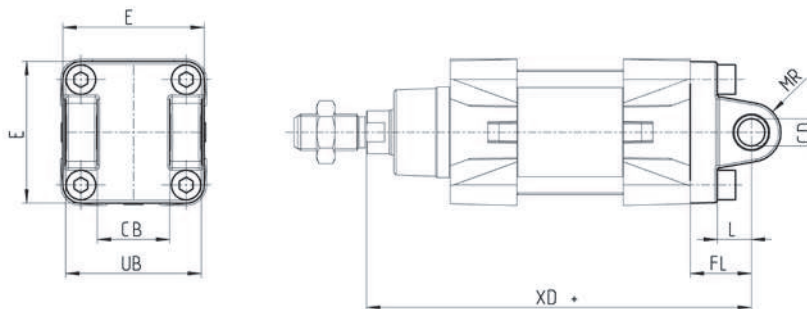
**Ancoraggio a cerniera femmina posteriore Mod. C e C-H**

Materiale: Alluminio



La fornitura comprende:  
N° 1 cerniera femmina  
N° 4 viti

+ = sommare la corsa



INGOMBRI											
Mod.	∅	CD	L	FL	XD+	MR	E	CB	UB	coppia di serraggio	
<b>C-41-32</b>	32	10	12	22	142	10	45	26	45	6 Nm	
<b>C-41-40</b>	40	12	15	25	160	13	52	28	52	6 Nm	
<b>C-41-50</b>	50	12	15	27	170	13	63	32	60	13 Nm	
<b>C-H-41-63</b>	63	16	20	32	190	15	73	40	70	13 Nm	
<b>C-H-41-80</b>	80	16	24	36	210	15	95	50	90	19 Nm	
<b>C-H-41-100</b>	100	20	29	41	230	18	115	60	110	22 Nm	
<b>C-H-41-125</b>	125	25	30	50	275	25	135	70	130	26 Nm	