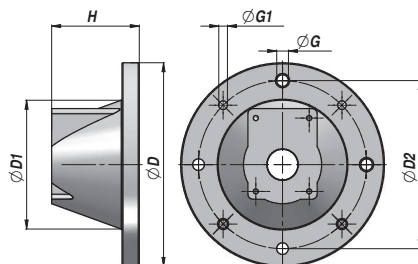
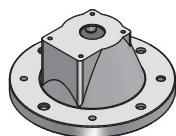


HL

LANTERNA PER MOTORE ELETTRICO
BELL-HOUSING TO CONNECT ELECTRIC MOTOR
PUMPENTRÄGER FÜR ELEKTROMOTOR

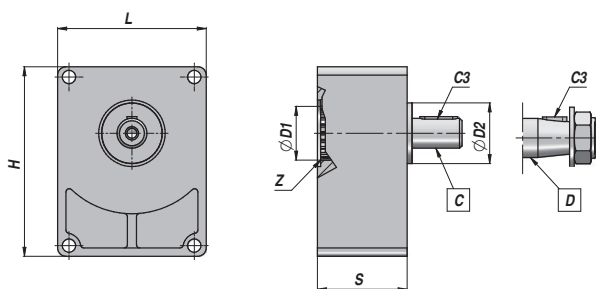
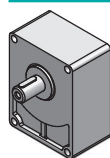


Codice Code Bestell-Nr.	Tipo Type Typ	ØD	Motore Elettrico Electric Motor Elektromotor kW	Pompa Pump Pumpe	ØD1	H	ØG	ØG1	ØD2	kg
AH30100300	HL1	160	0,27 - 0,37	GR.05	110	70	9	M8	130	0,44
AH30100200	HL2	"	"	GR.1	110	70	9	M8	130	0,44
AH30202700	HL4L	200	0,55 - 0,75	GR.05	130	86	11,5	M10	165	0,68
AH30202800	HL5L	"	0,55 - 0,75 - 1,1 - 1,5	GR.1	130	86	11,5	M10	165	0,67
AH30203500	HL7SL	"	"	GR.2/2T	130	95	11,5	M10	165	0,65
AH30302500	HL8/1L	250	2,2 - 3 - 4	GR.1	176	115	13	M12	215	1,22
AH30302600	HL9L	"	"	GR.2/2T	176	115	13	M12	215	1,21
AH15050005	HL11	"	"	GR.3	176	130	13	M12	215	1,20
AH30400800	HL12	300	5,5 - 7,5	GR.2/2T	229	148	13	M12	265	1,99
AH30400900	HL13	"	"	GR.3	229	148	13	M12	265	1,99
AH30401100	HL14	"	"	GR.3,5	229	148	13	M12	265	1,98
AH15000001	HL15	350	11 - 15	GR.2/2T	210	187	18	ø18	300	3,38
AH30509200	HL16	"	11 - 15 - 18,5 - 22	GR.3	210	187	18	ø18	300	3,38
AH15000004	HL17	"	"	GR.3,5	210	187	18	ø18	300	3,28
AH30508700	HL18	"	"	GR.4	210	187	18	ø18	300	3,39

DISPONIBILI ANCHE CON ANELLO DI RIDUZIONE - ALSO AVAILABLE WITH ADAPTER RING - PUMPENTRÄGER AUCH MIT REDUZIERUNG LIEFERBAR

STSU

SUPPORTO TIROCINGHIA
BELT PULLEY SUPPORT
VORSATZLAGER



Codice Code Bestell-Nr.	Tipo Type Typ	Pompa Pump Pumpe	ØD1	Z DIN 5482	ØD2	Albero Shaft Welle	C3	L	H	S	kg
BU12010002	STSU/1 - C	GR.1	25,4	Z14 - 25x22	50,8	C = ø18	6x6x25	75	93	40	0,80
BU12020001	STSU/2 - C	GR.2	36,5	Z14 - 25x22	36,5	C = ø18	6x6x30	89,4	114	54,5	1,40
BU12020007	STSUR/2 - C	GR.2	36,5	Z15 - 28x25	50,8	C = ø22	6x6x40	89,4	114	52	1,75
BU12030001	STSU/3 - C	GR.3	50,8	Z18 - 35x31	50,8	C = ø24	8x7x40	123,5	153,2	52	2,20
BU12010001	STSU/1 - D	GR.1	25,4	Z14 - 25x22	50,8	D =	4 x 6,5	75	93	40	0,80
BU12020004	STSU/2 - D	GR.2	36,5	Z14 - 25x22	36,5	Conico Tapered Konisch	4 x 6,5	89,4	114	54,5	1,40
BU12020008	STSUR/2 - D	GR.2	36,5	Z15 - 28x25	50,8	1:8	4 x 6,5	89,4	114	52	1,75
BU12030002	STSU/3 - D	GR.3	50,8	Z18 - 35x31	50,8		4 x 7,5	123,5	153,2	52	2,20