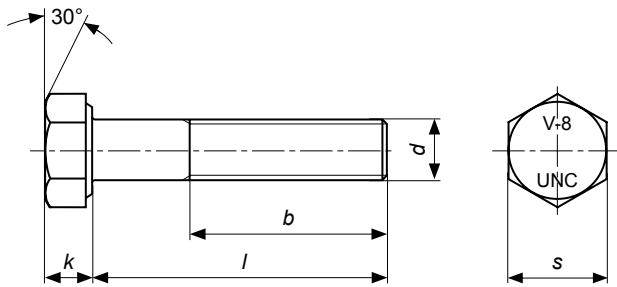


VITI A TESTA ESAGONALE UNC HEXAGON HEAD SCREWS UNC

FILETTATURA US STANDARD A PASSO GROSSO UNIFICATO / US STANDARD UNIFIED NATIONAL COARSE THREAD



ANSI
B18 2.1

MATERIALE	ACCIAIO	
MATERIAL	STEEL	
PROPRIETÀ MECCANICHE	SECONDO	SAE J429
MECHANICAL PROPERTIES	ACCORDING TO	
CLASSE		
CLASS		
TOLLERANZE	SECONDO	ASME-ANSI B1-1
TOLLERANCES	ACCORDING TO	

DISPONIBILI: Brunito - Altri trattamenti a richiesta
AVAILABLE: Black - Other coatings on request

d inches	1/4"	5/16"	3/8"	7/16"	1/2"	9/16"	5/8"	3/4"	7/8"	1"
d mm	6,35	7,94	9,52	11,11	12,7	14,29	15,88	19,05	22,22	25,4
s	7/16"	1/2"	9/16"	5/8"	3/4"	13/16"	15/16"	1 1/8"	1 5/16"	1 1/2"
k	5/32"	13/64"	15/64"	9/32"	5/16"	23/64"	25/64"	15/32"	35/64"	39/64"
b	3/4"	7/8"	1"	1 1/8"	1 1/4"	1 3/8"	1 1/2"	1 3/4"	2"	2 1/4"
p**	20	18	16	14	13	12	11	10	9	8

/ = LUNGHEZZA / LENGTH	l inches	l mm										Kg
	1/2"	12,70	5,35	9,03	13,30							
5/8"	15,88	5,94	9,98	14,70								
3/4"	19,05	6,53	10,93	16,10	23,05	36,80	39,00					
7/8"	22,23	7,12	11,88	17,50	24,95	39,30	42,80					
1"	25,40	7,89	12,83	18,90	26,85	41,80	55,36	67,00	115,88			
1 1/4"	31,75	9,43	15,28	22,10	30,66	46,90	61,84	75,90	127,39			
1 1/2"	38,10	10,97	17,73	26,10	35,47	52,70	68,31	84,80	138,90	196,30		
1 3/4"	44,45	12,51	20,18	29,70	41,70	59,10	74,78	93,70	150,40	213,90		
2"	50,80	14,05	22,63	33,30	46,01	65,50	81,25	102,60	161,91	231,60	329,26	
2 1/4"	57,15	15,59	25,08	36,90	50,95	71,90	87,72	111,50	173,42	249,23	349,66	
2 1/2"	63,50	17,13	27,53	40,50	55,88	78,30	94,20	120,40	184,92	266,88	370,06	
2 3/4"	69,85	18,67	29,98	44,10	60,82	84,70	100,67	129,30	196,43	284,53	390,45	
3"	76,20	20,21	32,43	47,70	65,75	91,10	107,14	138,20	207,94	302,18	410,85	
3 1/4"	82,55	21,75	34,88	51,30	70,69	97,50	113,61	147,10	219,44	319,83	431,25	
3 1/2"	88,90	23,29	37,33	54,90	75,63	103,90	120,08	156,00	230,95	337,48	451,64	
3 3/4"	95,25	24,83	39,78	58,50	80,56	110,30	126,56	164,90	242,46	355,13	472,04	
4"	101,60	26,37	42,23	62,10	85,50	116,70	133,03	173,80	253,96	372,78	492,44	
4 1/2"	114,30						146,00	192,00	277,00	409,00	534,00	

Kg PESO PER 1000 PEZZI / WEIGHT FOR 1000 PCS

(*) La classe SAE 5 corrisponde a ISO 8.8.

(*) Class 5 SAE corresponds to ISO 8.8.

(**) p = Spire per pollice

(**) p = Threads per inch

