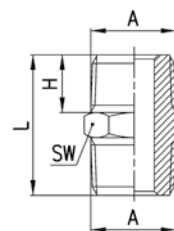
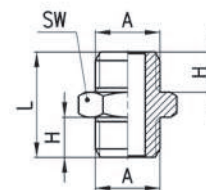


**Raccordi Mod. 2500**

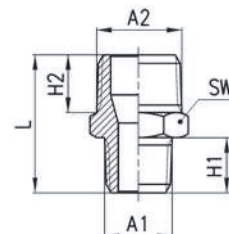
Nuova taglia



INGOMBRI					
Mod.	A	H	L	SW	Peso (g)
<b>2500 1/8</b>	R1/8	7,5	19,5	12	9
<b>2500 1/4</b>	R1/4	11	27	14	16
<b>2500 3/8</b>	R3/8	11,5	28	17	21
<b>2500 1/2</b>	R1/2	14	33,5	22	41
<b>2500 3/4</b>	R3/4	16,5	40	27	80
<b>2500 1</b>	R1	19	45,5	34	125

**Raccordi Mod. 2501**


INGOMBRI					
Mod.	A	H	L	SW	Peso (g)
<b>2501 M5</b>	M5	4	11,5	8	2
<b>2501 1/8</b>	G1/8	6	16,5	13	9
<b>2501 1/4</b>	G1/4	8	21	17	15
<b>2501 3/8</b>	G3/8	9	23	19	21
<b>2501 1/2</b>	G1/2	10	25,5	24	35

**Raccordi Mod. 2510**


INGOMBRI							
Mod.	A1	A2	H1	H2	L	SW	Peso (g)
<b>2510 1/8-1/4</b>	R1/8	R1/4	7,5	11	23,5	14	14
<b>2510 1/8-3/8</b>	R1/8	R3/8	7,5	11,5	24	17	18
<b>2510 1/4-3/8</b>	R1/4	R3/8	11	11,5	27,5	17	20
<b>2510 1/4-1/2</b>	R1/4	R1/2	11	14	30,5	22	34
<b>2510 3/8-1/2</b>	R3/8	R1/2	11,5	14	31	22	34
<b>2510 1/2-3/4</b>	R1/2	R3/4	14	16,5	37,5	27	67