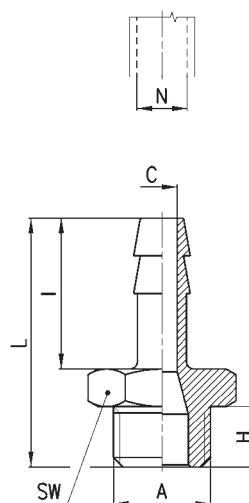
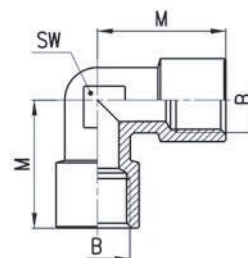


Raccordi Mod. 2601



INGOMBRI								
Mod.	N	A	C	H	I	L	SW	Peso (g)
<b>2601 2-M5</b>	2	M5	1,2	4	8	16	8	2
<b>2601 4,5-M5</b>	4	M5	2,5	4	15	23	8	3
<b>2601 7-1/8</b>	7	G1/8	4	6	20	30	12	9
<b>2601 7-1/4</b>	7	G1/4	4	8	20	33	17	16
<b>2601 8-1/8</b>	8	G1/8	5	6	20	30	12	10
<b>2601 9-1/8</b>	9	G1/8	5,5	6	20	30	12	11
<b>2601 9-1/4</b>	9	G1/4	6	8	20	33	17	17
<b>2601 9-3/8</b>	9	G3/8	6	9	20	34	19	21
<b>2601 12-1/4</b>	12	G1/4	8,5	8	20	33	17	20
<b>2601 12-3/8</b>	12	G3/8	9	9	20	34	19	23
<b>2601 12-1/2</b>	12	G1/2	9	10	20	35,5	24	34
<b>2601 17-3/8</b>	17	G3/8	12	9	24	38	19	31
<b>2601 17-1/2</b>	17	G1/2	13	10	24	39,5	24	41

Raccordi Mod. 2013



INGOMBRI				
Mod.	B	M	SW	Peso (g)
<b>2013 1/8</b>	G1/8	19	11	16
<b>2013 1/4</b>	G1/4	23	14	28
<b>2013 3/8</b>	G3/8	25	16	39
<b>2013 1/2</b>	G1/2	31,5	20	69