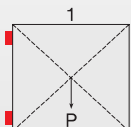
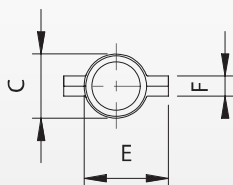
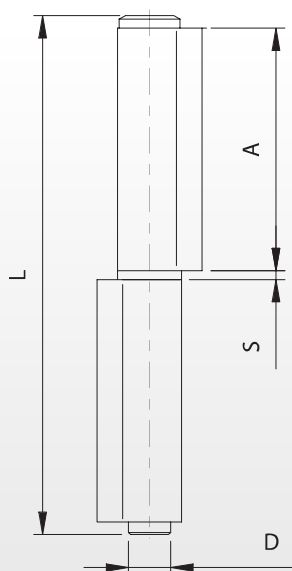


Cerniera pesante a 2 ali con perno sfilabile

Heavy hinge with 2 wings and extractable pivot
 Paumelle lourde avec 2 ailes et pivot à déboîter
 Anschweißband 2-teilig schwere Ausführung mit lösem Zapfen

405 - 405Z - 405 inox



Perno Zincato

Peso uniformemente distribuito - Equally distributed weight

| Articolo | Codice | Articolo | Codice | A | C | D | E | F | L | S | | | |
|----------|----------|----------|--------------|----|------|-------|----|-----|-----|-----|-----|----|------|
| 405-140 | 11604514 | 405Z-140 | 11604514 001 | 68 | 17,6 | Ø11,7 | 25 | 5,6 | 145 | 2,5 | 450 | 10 | 3,00 |
| 405-170 | 11604517 | 405Z-170 | 11604517 001 | 83 | 17,6 | Ø11,7 | 25 | 5,6 | 174 | 2,5 | 600 | 10 | 3,60 |
| 405-200 | 11604520 | 405Z-200 | 11604520 001 | 98 | 19,6 | Ø13,6 | 27 | 5,6 | 205 | 2,5 | 750 | 10 | 5,20 |

| Articolo | INOX | A | C | D | E | F | L | S | | | |
|----------|----------|----|------|-------|----|-----|-----|-----|-----|----|------|
| 405I-140 | 11604614 | 68 | 17,6 | Ø11,7 | 25 | 5,6 | 145 | 2,5 | 450 | 10 | 3,00 |
| 405I-170 | 11604617 | 83 | 17,6 | Ø11,7 | 25 | 5,6 | 174 | 2,5 | 600 | 10 | 3,60 |
| 405I-200 | 11604620 | 98 | 19,6 | Ø13,6 | 27 | 5,6 | 205 | 2,5 | 750 | 10 | 5,20 |

